



S.M.A.R.T. Tool User Manual

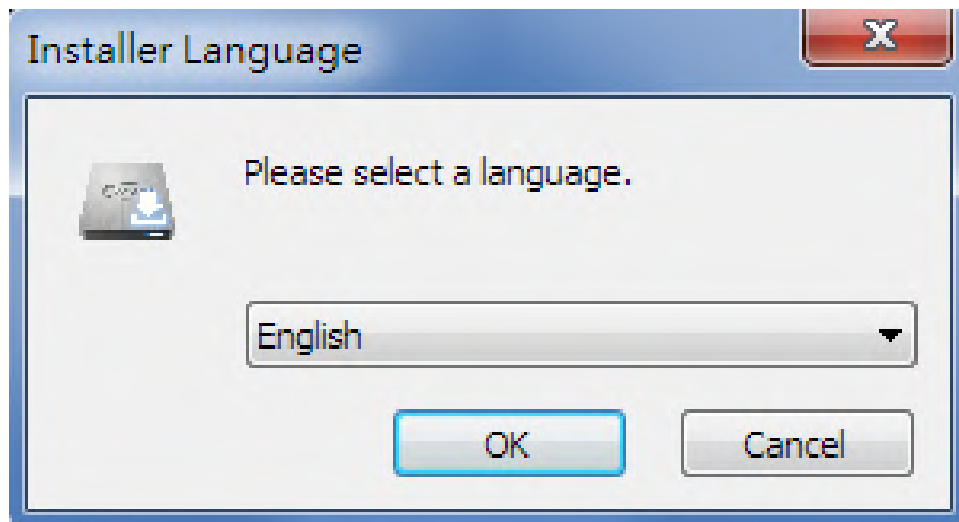
System Requirements.....	1
Installation.....	1
Usage.....	3
1. Disk Info.....	3
2. System Info.....	5
3. Performance.....	6
4. About.....	6
Memo.....	7
Revision History.....	7

System Requirements

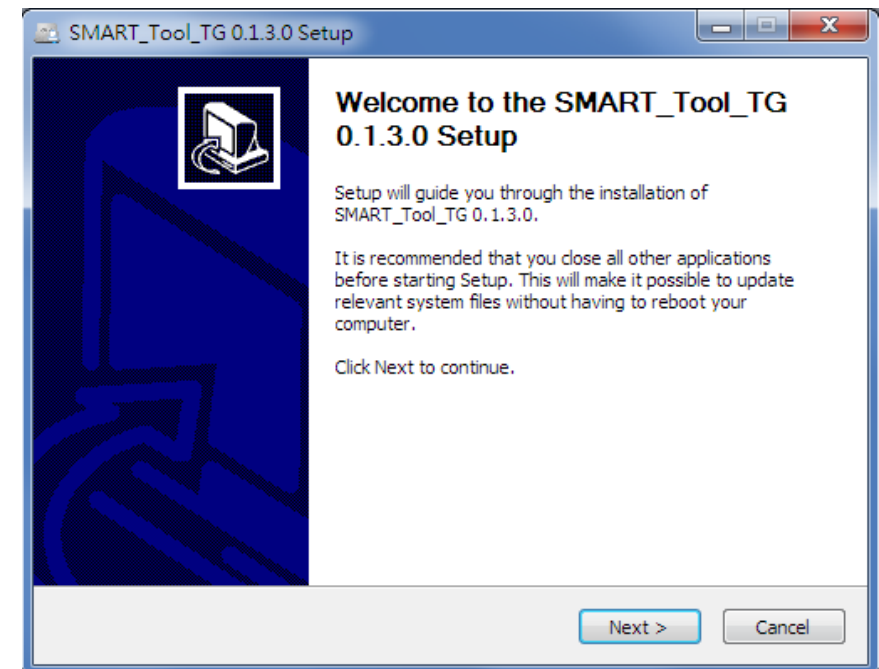
- Microsoft Windows® 8 / 8.1 (32/64 bit)
- Microsoft Windows® 10 (32/64 bit)

Installation

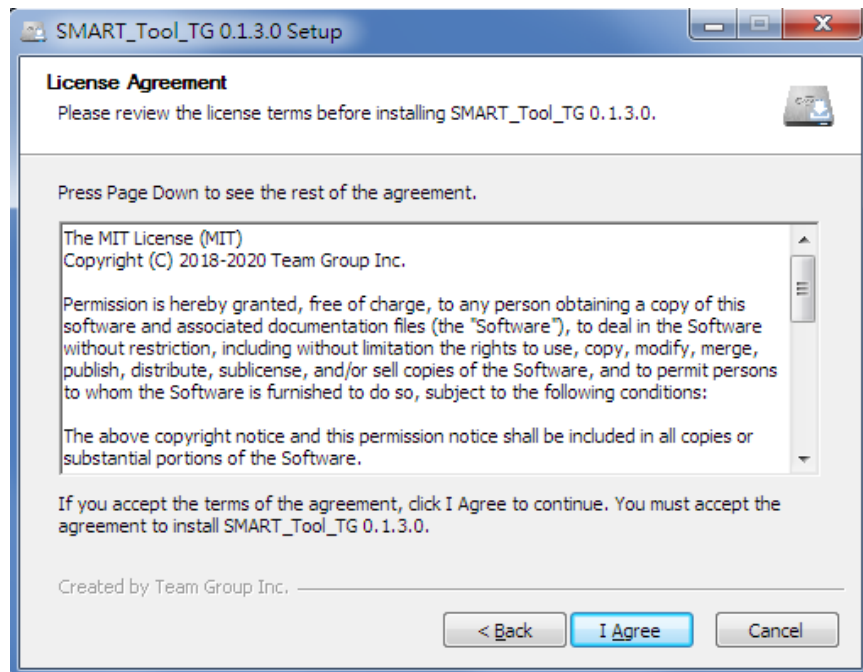
1. Please download the latest version of S.M.A.R.T Tool from TEAMGROUP's website:
<https://www.teamgroupinc.com/tw/support/download.php>
2. Double click "SMART_Tool_TG_Setup.exe" to start installation.
3. Select your preferred language.



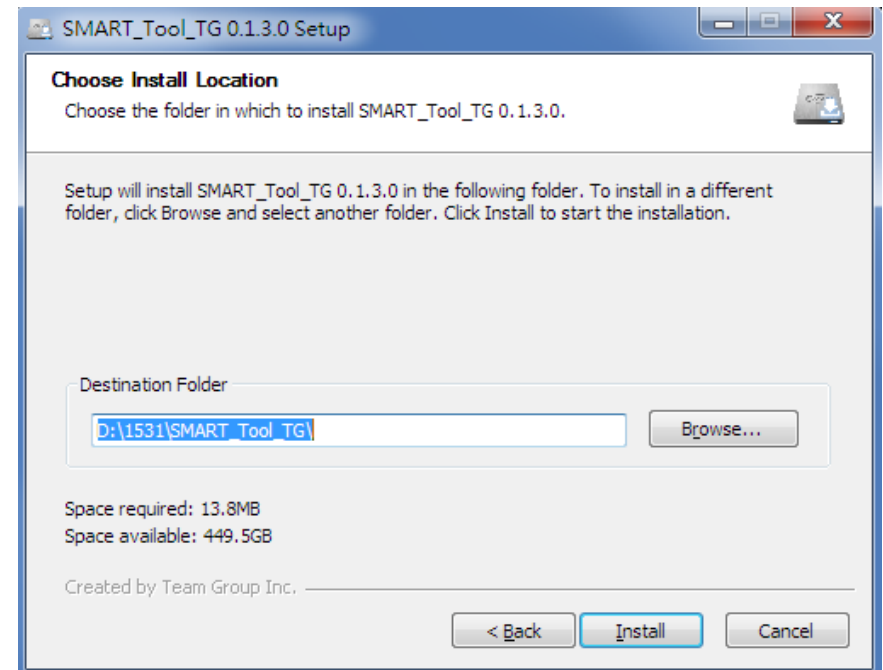
4. Click next.



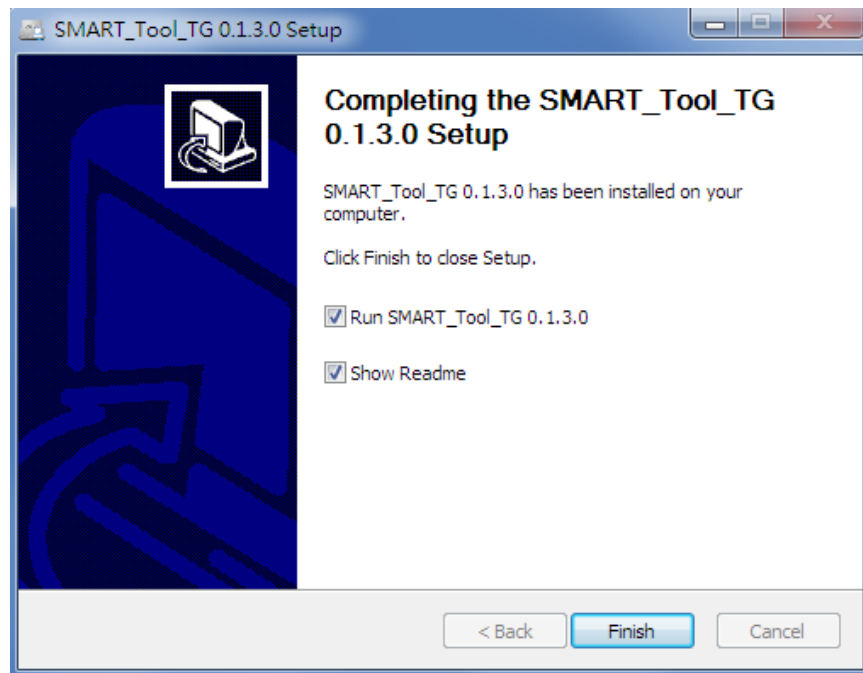
5. View the license, if you accept, please click “I agree” to proceed.



6. Select destination folder and click “Install”.



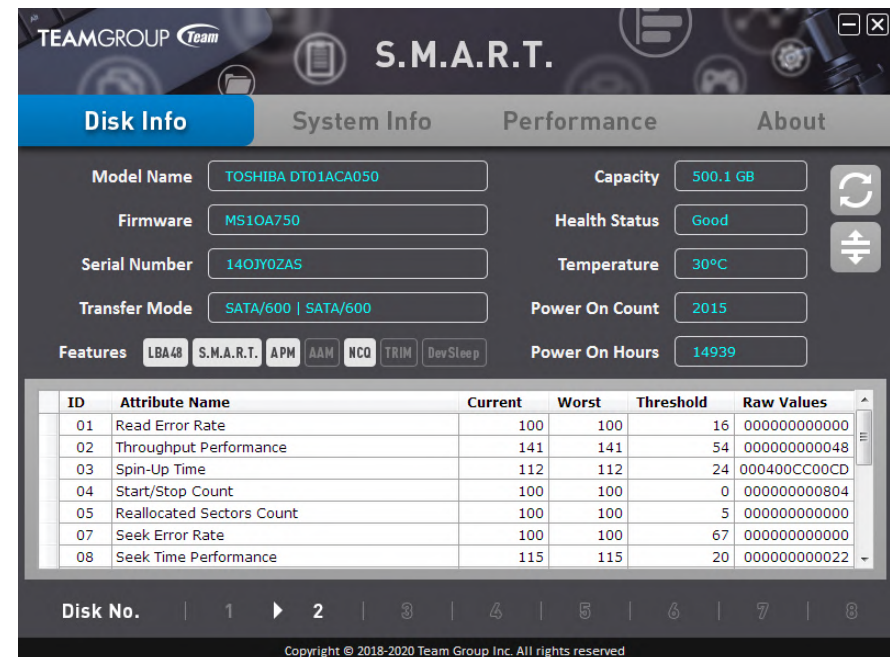
7. After the installation process is over, the program has been installed, you can start the program from desktop shortcut, or check "Run SMART_TOOL".



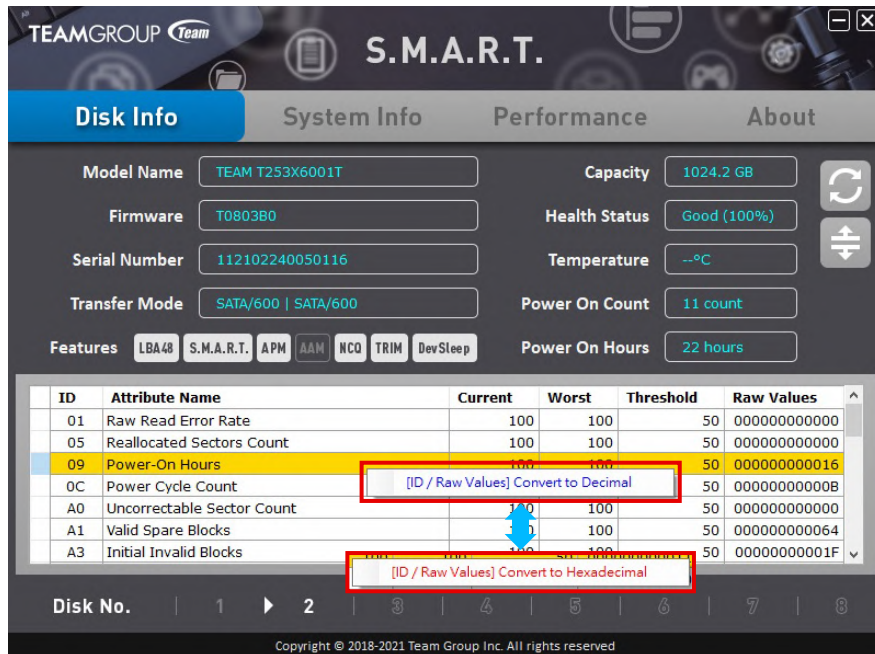
Usage

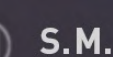
1. Disk Info

- 1-1. Click "Disk Info" to view selected drive's information, including drive model, firmware, transfer mode, capacity, health status, temperature, power on count, power on hours, and S.M.A.R.T analyze results, you can use keyboard's "1~8" hotkey to switch between drives.



1-2. Right click S.M.A.R.T. Table to convert Hexadecimal/-Decimal.



TEAMGROUP  S.M.A.R.T.

Disk Info System Info Performance About

Model Name: TEAM T253X6001T Capacity: 1024.2 GB

Firmware: T0803B0 Health Status: Good (100%)

Serial Number: 112102240050116 Temperature: --°C

Transfer Mode: SATA/600 | SATA/600 Power On Count: 11 count

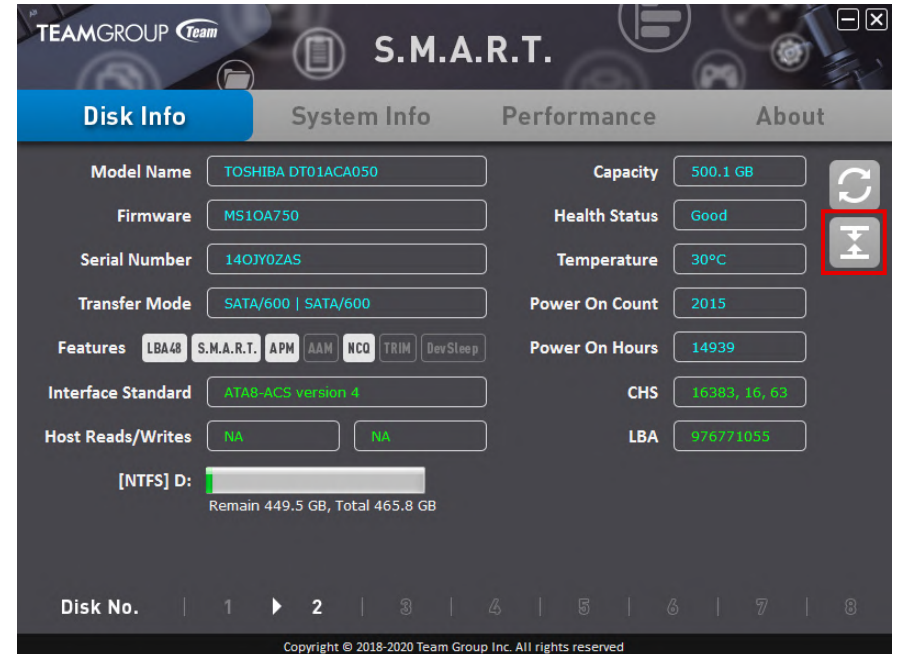
Features: LBA48 S.M.A.R.T. APM AAM NCQ TRIM DevSleep Power On Hours: 22 hours

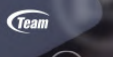
ID	Attribute Name	Current	Worst	Threshold	Raw Values
01	Raw Read Error Rate	100	100	50	000000000000
05	Reallocated Sectors Count	100	100	50	000000000000
09	Power-On Hours	100	100	50	000000000016
0C	Power Cycle Count	100	100	50	000000000008
A0	Uncorrectable Sector Count	100	100	50	000000000000
A1	Valid Spare Blocks	100	100	50	000000000064
A3	Initial Invalid Blocks	100	100	50	00000000001F

Disk No. 1 2 3 4 5 6 7 8

Copyright © 2018-2021 Team Group Inc. All rights reserved

1-3. Click expand (hotkey F6) to view interface standard, host reads/writes, CHS, LBA, and used capacity.



TEAMGROUP  S.M.A.R.T.

Disk Info System Info Performance About

Model Name: TOSHIBA DT01ACA050 Capacity: 500.1 GB

Firmware: MS10A750 Health Status: Good

Serial Number: 140JY0ZAS Temperature: 30°C

Transfer Mode: SATA/600 | SATA/600 Power On Count: 2015

Features: LBA48 S.M.A.R.T. APM AAM NCQ TRIM DevSleep Power On Hours: 14939

Interface Standard: ATA8-ACS version 4 CHS: 16383, 16, 63

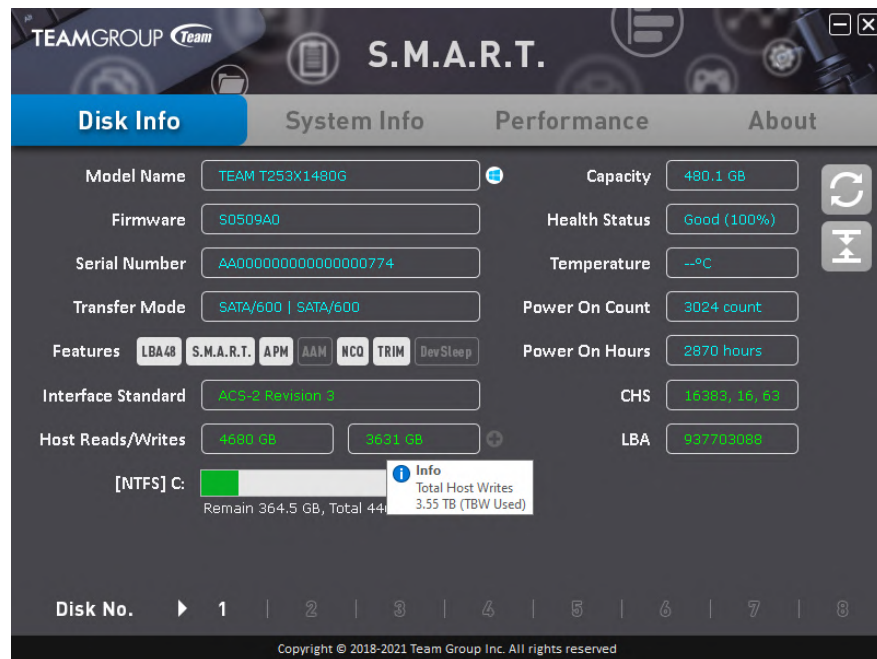
Host Reads/Writes: NA NA LBA: 976771055

[NTFS] D: Remain 449.5 GB, Total 465.8 GB

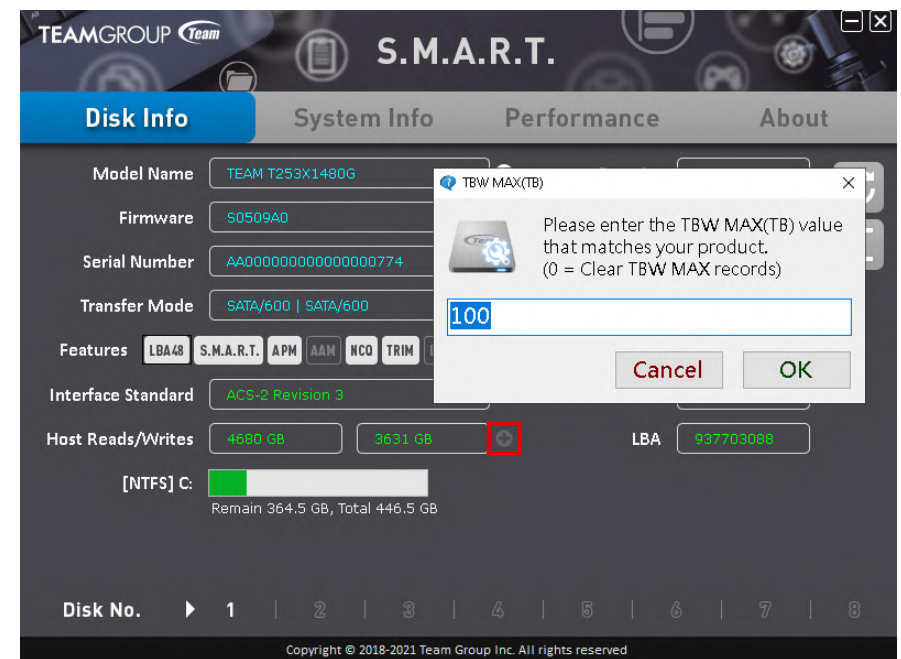
Disk No. 1 2 3 4 5 6 7 8

Copyright © 2018-2020 Team Group Inc. All rights reserved

1-4. Move the cursor to Host Writes to know the Total Host Writes of the SSD write volume.



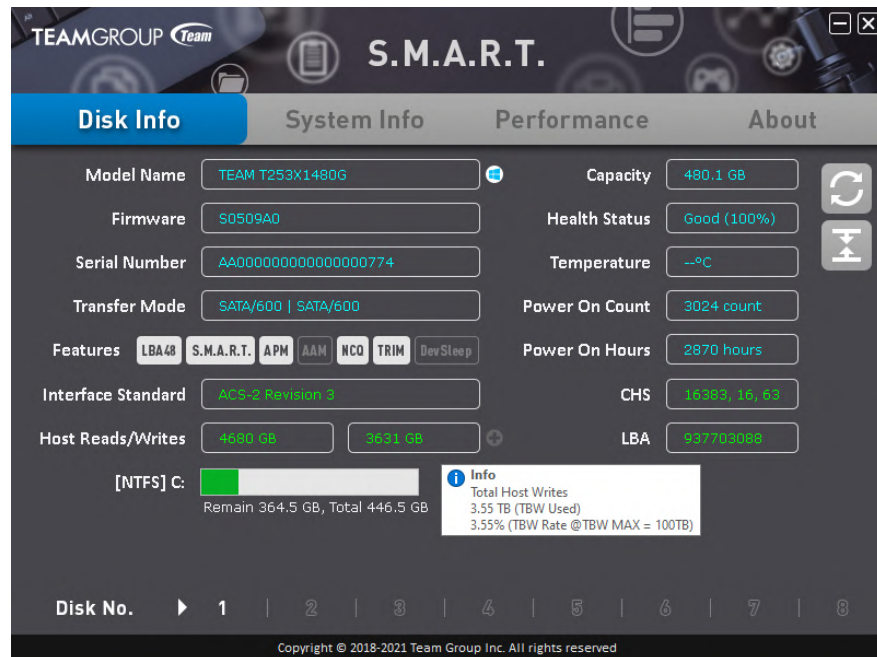
1-5. Click the green button with the "+" in it, insert TBW MAX value and click OK



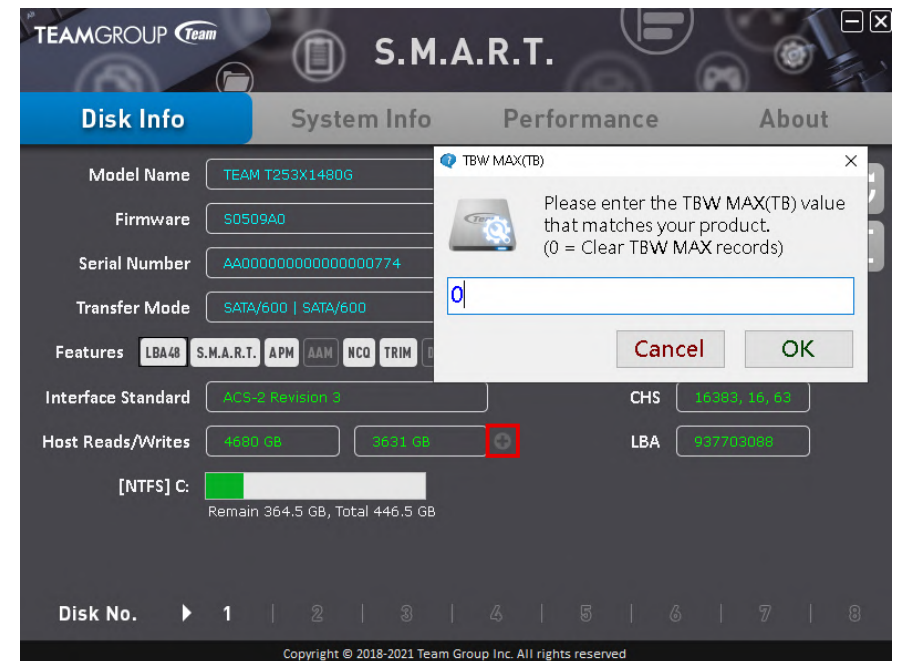
Note: TBW LIST please refer to the link below:

https://www.teamgroupinc.com/tw/download/index.php?index_id=99

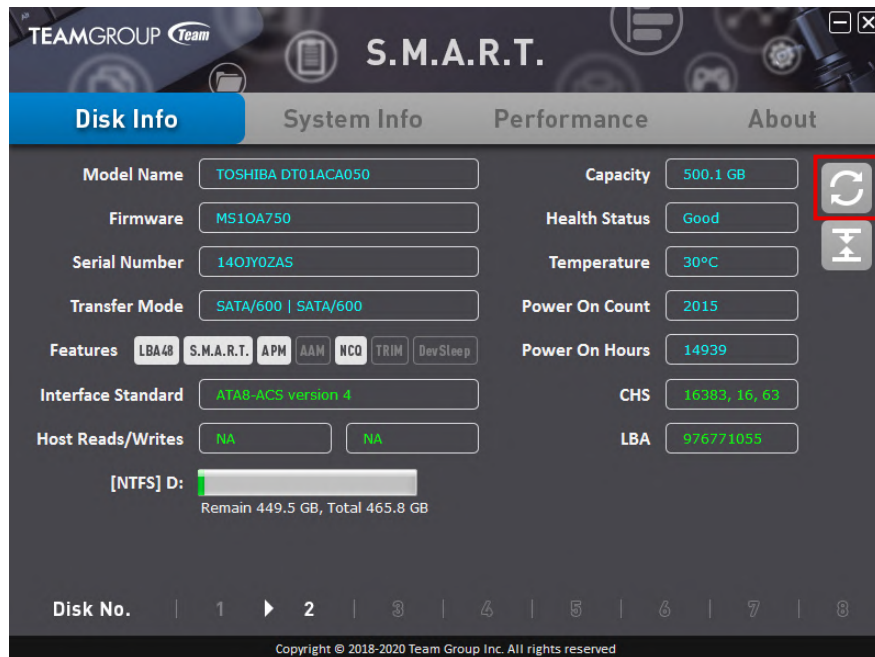
1-6. Move the cursor to Host Writes to know the Total Host Writes of the SSD write volume and TBW rate (%).



1-7. To modify TBW MAX value, click the green button with the "+" in it and insert a new value. To cancel TBW MAX, insert "0".



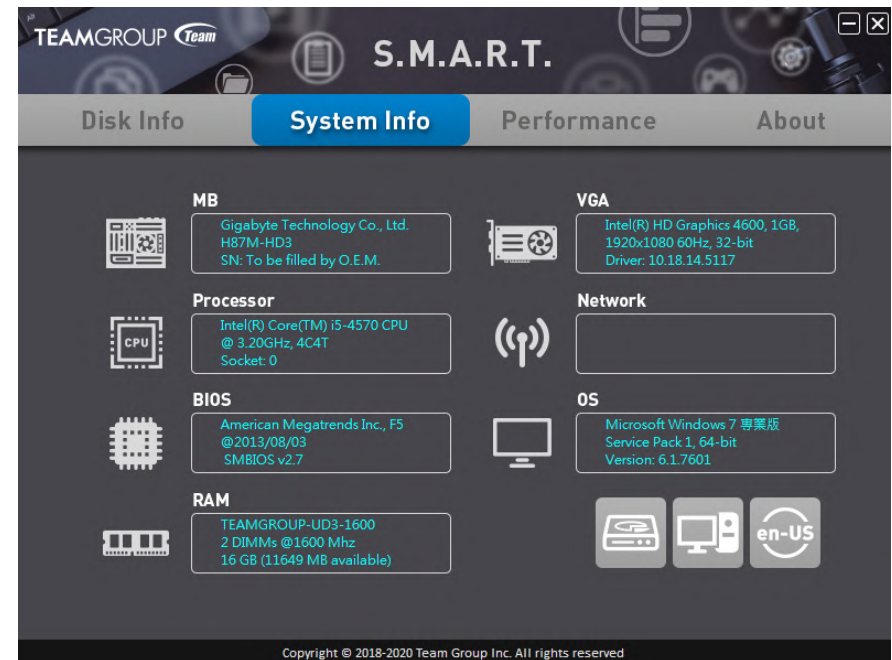
1-8. Click refresh (hotkey F5) to refresh device information.



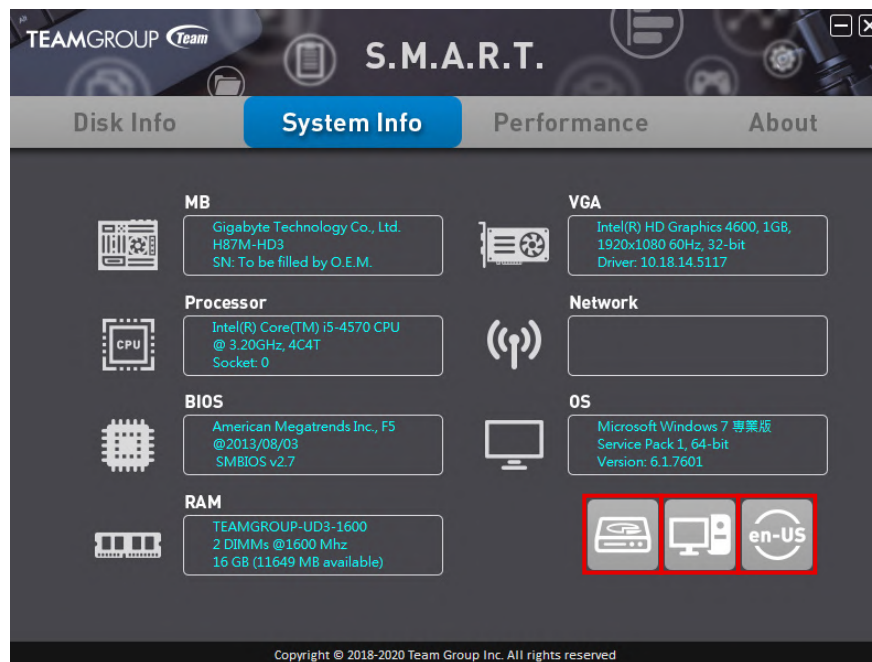
1-9. If S.M.A.R.T Tool detects your drive health status is “Bad” it is highly suggested that you back up your file immediately.

2. System Info

2-1. Click “System info” to show your current setup.



2-2. The red circled icons from left to right are “open disk management”, “open device management”, “change S.M.A.R.T. Tool language”.



3. Performance

3-1. Click “performance” to exam disk’s random and sequential read/write speed.

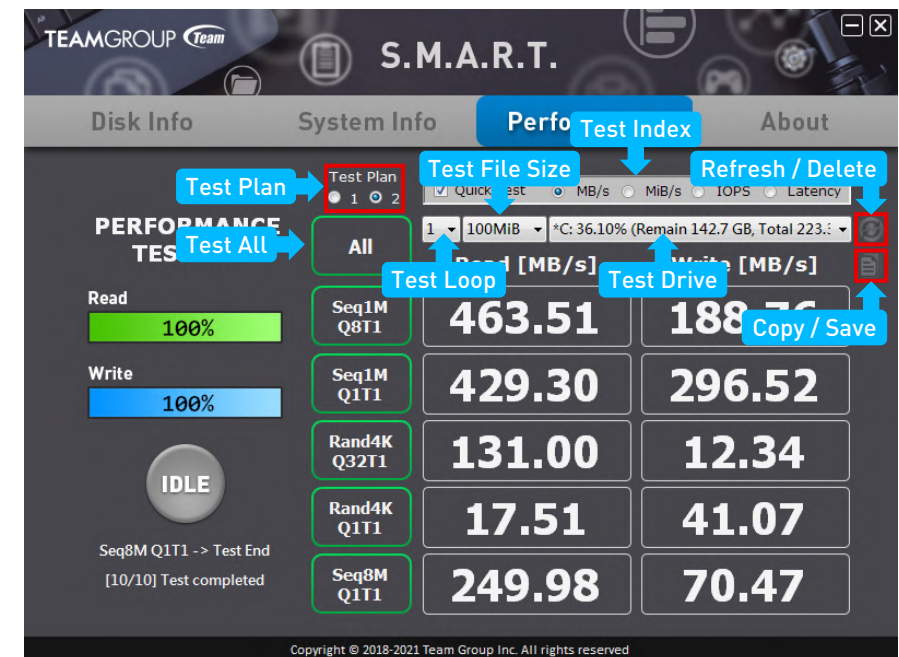
3-2. You can select test file size, test drive, test index, test loop or test all.

3-3. Quick test (default open): Closing it will extend warm up time for more stable results.

3-4. You may switch different test plan (CDM v6.0 / CDM v8.0)

3-5. Click the refresh button to refresh device or clear test temporary file

3-6. Click the copy button to copy test results, long press to save as txt. file



4. About

4-1. Click on “about” to check your S.M.A.R.T Tool version.

4-2. Click F8 to switch different UI.



If there's any other questions, please contact us through our online support. <https://www.teamgroupinc.com/tw/support/>



Team Group Inc.

www.teamgroupinc.com

3F, NO.166, Jian Yi Rd., Zhonghe Dist., New Taipei City 23511, Taiwan, R.O.C.

TEL: +886-2-8226-5000 | FAX: +886-2-8226-5808