



T-FORCE x InWin 216 Co-branding Gaming Case

Product Story

The first T-FORCE and InWin co-branding 216 gaming case features the unique characteristics of T-FORCE on the front panel and a sleek silhouette with a chic tech style. The optimized compartments support a variety of advanced hardware equipment. With top-notch heat dissipation performance and exceptional compatibility, it is the primary gaming PC case for gamers.

T-FORCE x InWin 216 Co-branding Gaming Case



Specifications

Color	Black
Case type	Mid Tower
Materials	SECC, tempered glass
Motherboard compatibility	12" x 13" E-ATX , ATX , Micro-ATX , Mini-ITX
Expansion slots	PCI-E x 7, Vertical PCI-E slots x 2 (Riser card optional; not included in package)
Maximum compatibility	VGA card length : 380mm maximum VGA card width : 170mm maximum Vertical display VGA card thickness : 58mm maximum CPU heatsink height : 166mm
I/O ports	2 x USB 3.0, HD Audio
Internal drive bays	2 x 3.5" 2 x 2.5" (2 x 2.5" pre-installed, max. up to 3)
Thermal solution compatibility	1 x 120mm rear fan/120mm radiator 3 x 120mm front fans / 360mm radiator 2 x 120mm top fans
* Number of fans pre-installed may vary based on different regions of sales.	
Power supply compatibility	PSII: ATX12V (Installation area length is 220mm.)
Product dimensions (H x W x D)	465 x 220 x 460mm 18.3" x 8.7" x 18.1"
Package dimensions (H x W x D)	558 x 282 x 522mm 22.0" x 11.1" x 20.6"
Net weight	7.3 kg
Gross weight	8.6 kg
Warranty	2-year limited warranty

* This product complies with RoHS regulations

Package Contents



- 1 T-FORCE x InWin 216 Co-branding Gaming Case

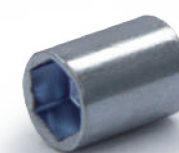
- 2 QR Code Card



- 3 Accessories Bag



- a. Motherboard Stand-offs x11



- b. Motherboard Stand-off Socket x1



- c. Hexagon Head Screws x18



- d. 2.5" HDD Screws x10

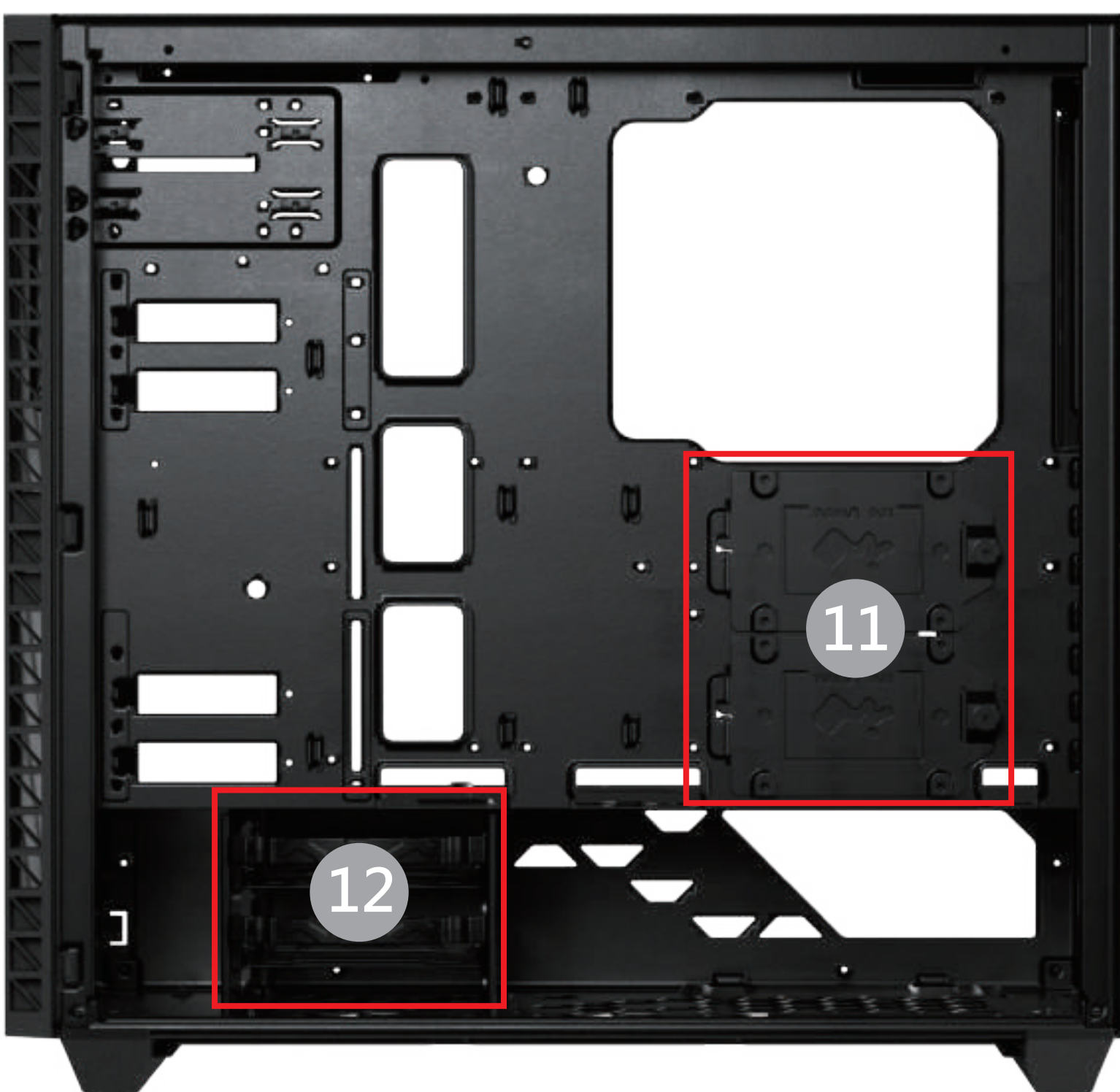
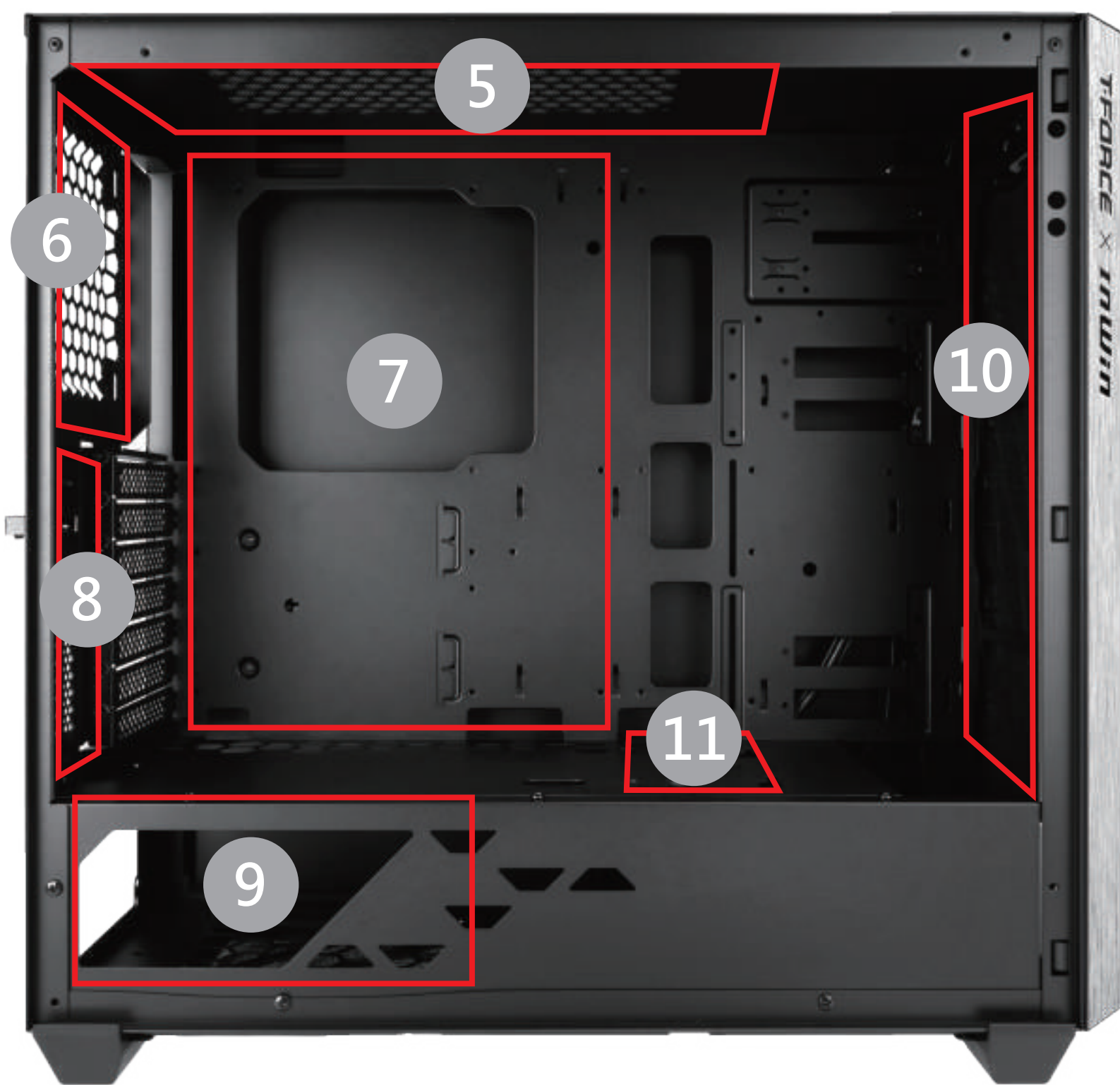


- e. Cable Ties x10



- f. Graphics Card Holder x1

Case Structure



1	Power Button
2	USB 3.0 Ports
3	Audio Ports (Earphone and Microphone)
4	Quick-Removal Dust Filter
5	Top Fan
6	Rear Fan / Radiator
7	Motherboard Mounting Area
8	PCI-E Expansion Slots
9	Power Supply Mounting Area
10	Front Fan / Radiator
11	2.5" Drive Bay
12	3.5" Drive Bay
13	Dust Filter

Installation Guide

For more assembly instructions, please scan the QR Code below or watch the video in the website link:

<https://youtu.be/VAUbK8yvogg>



Notices and Warranty

■ Notices

1. Please follow the user manual for installation guidelines.
2. When installing the computer components, please use antistatic precautions to prevent ESD (electrostatic discharge) damage. Failure to take the necessary precautions may result in injury to the installer and/or damage to the machine. Incorrect installation may burnout the motherboard and other system components.
3. To avoid any damages, please do not use this product for any other purpose than its intended use.
4. Any modifications may damage the product and will void the warranty.
5. Please remove all internal devices before shipping or moving. (Including power supply, hard drives, motherboard, CPU, etc.)
6. When storing the case, please keep this product away from high temperatures. Keep away from machines such as heaters that might cause high temperatures.

■ Warranty

- * For more detailed warranty information, please visit the TEAMGROUP retail website at <https://www.teamgroupinc.com>.
- * The actual product is subject to change without prior notice. Team Group Inc. reserves the right to make final modifications



BE INVINCIBLE

www.teamgroupinc.com

www.in-win.com